



SmartLoop/2L 2 Loop expansion card

SMARTLOOP



GENERAL DESCRIPTION

SmartLoop/2L expansion boards provide two OpenLoop-technology loops. Up to 3 of these boards can be connected to each expandable control panel (2080 models only) in order to expand the panel to a maximum of 8 loops.

OpenLoop-technology loops can be programmed to operate independently with many compatible device types such as Apollo and Argus. Non-expandable control panels (1010 models) cannot accommodate loop expansion boards.

MAIN FEATURES

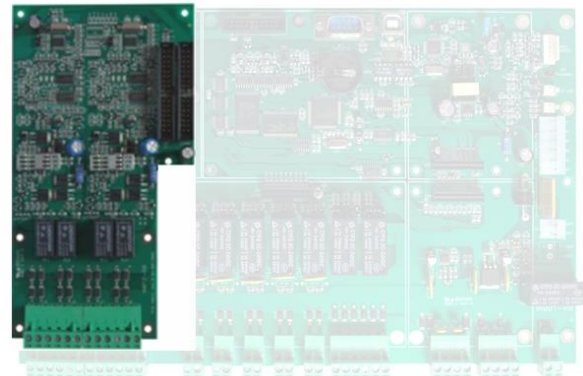
- Connectable inside SmartLoop 2080 panels
- Each card adds 2 Loops to the Panel
- Up to 3 cards in each panel
- Each loop can work independently with Argus protocol or Apollo protocol
- Each Loop can manage up to 240 devices with Argus protocol or 126 devices with Apollo protocol

ORDERING CODES

SmartLoop/2L	2 Loop expansion Card
--------------	-----------------------

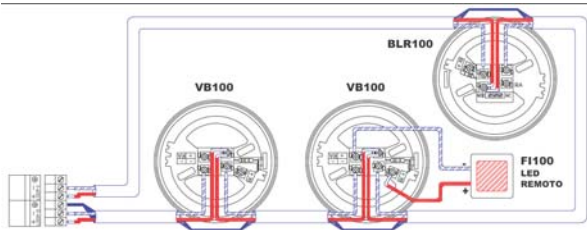
INSTALLATION

The module is supplied with metal spacers to be screwed on panel main board and with a flat cable for its connection.



WIRING

On each loop can be connected up to 240 devices with Argus Protocol or 126 devices with Apollo Protocol.
Loop wiring by means of a 2 pole shielded twisted cable.



Argus Detectors Connection



INIM ELECTRONICS s.r.l.

Via Fosso Antico – Loc. Centobuchi
63033 MONTEPRANDONE
(AP) ITALY
Tel. +39 0735 705007
Fax +39 0735 704912
www.inim.biz

DISTRIBUTOR: