

1008031000

CRM-V

IP Flush Master Station

 UL Certified Intercom



DESCRIPTION

- Compatible with AlphaCom, Pulse and iPBXs (SIP)
- Made for CCoIP® - Critical Communication over IP
- Robust aluminium front plate
- Large high contrast display with backlight for excellent readability
- Four dynamic navigation keys and four DAK keys for quick access to system menus and directory entries.
- White light behind all keys for excellent readability in dark environments
- Optional noise cancelling goose-neck microphone
- Optional handset unit
- Optional IP DAK-48 Unit
- Remote software upgrade, configuration and monitoring
- Integrated data switch with advanced networking and security functions
- Powered from the IP network cable using Power over Ethernet (PoE)
- Superb audio quality – high bandwidth codec, active noise cancellation, acoustic echo cancellation and high output power amplifier
- Clean relay output contact for control of external equipment

The CRM V is an IP control room intercom intended for use in control and guard rooms. The station features a large high contrast display with adjustable backlight and up to 8 lines with 20 characters. The station has four direct access keys. Each key has a red and a green LED to show status.

The IP station supports open standards and is compatible with AlphaCom, Pulse and iPBXs using SIP technology. When working in AlphaCom mode, the IP station supports special services only available using the Vingtor-Stentofon CCoIP protocol, AlphaCom server. Examples of services are emergency broadcast with volume override, CCTV integration, call priority, and AlphaNet multisite networking and VINGTOR-STENTOFON event scripting.

Like all Vingtor-Stentofon stations, this IP flush station features superb audio quality. This is enabled through a set of advanced technologies such as active noise filtering, acoustic echo cancellation, wide band audio codec, and high power audio outputs. The IP station has an integrated managed data switch providing advanced networking and security features. The integrated switch provides support for:

- Protection from unwanted access
- Quality of Service (QoS) by managing data traffic
- Increased system availability through redundant LAN infrastructure
- Cost efficient installation by providing shared network connections

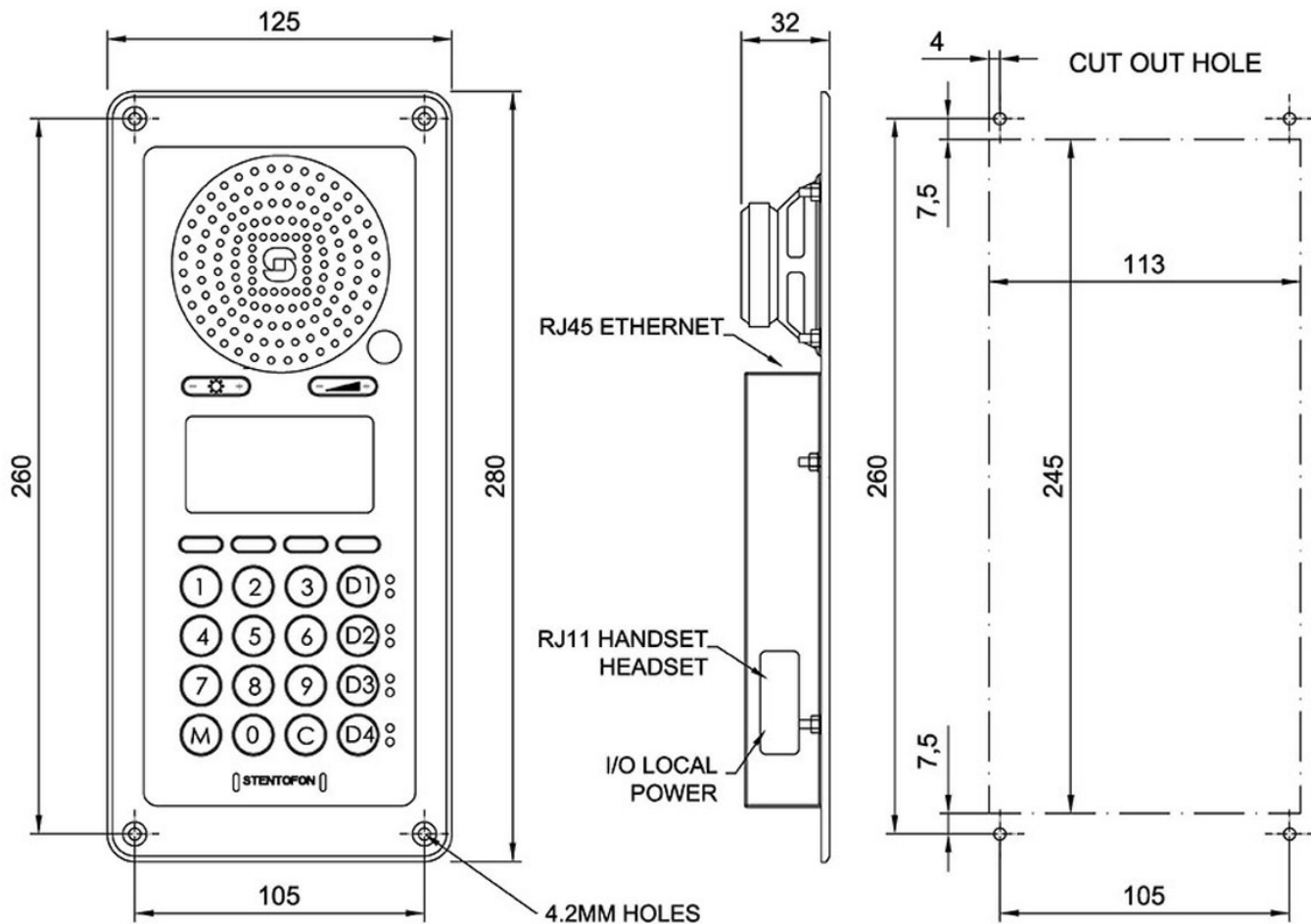
To provide maximum availability the station comes with advanced supervision functions. The station line test will detect if there is any faults in the network or station electronics. In addition the station supports tone test, testing the complete transmission path including microphone and speaker. The status of the stations is reported to AlphaWeb as well as to 3rd party management systems using SNMP, Syslog or OPC.

SPECIFICATIONS

GENERAL

Dimensions (WxHxD)	125 x 280 x 33 mm
Weight	0.63 kg
Temperature Range	0°C to + 50°C
Relative humidity	< 95% not condensing
User interface	Backlit graphical display, 35 mm x 68 mm, 4 function keys, 4 programmable direct access keys (DAK), Green/Red status, LED per DAK, Full keypad, Call indication LED
Power	Power over Ethernet, IEEE 802.3 a-f, Class 0, Local power 19 – 27 VDC, Idle 4W, max. 8W
Connectors	RJ45 (Ethernet) - RJ11 (Handset & Headset), Pluggable screw terminals (I/O local power)
Remote control Max. switching capacity , Max. voltage relay, Max current relay	3 digital inputs, 1 relay output and one logical output, 30W DC, 60V DC, 1A DC
SIP	RFC 3261, SIP Info (DTMF), RFC 2833 (DTMF)
IP protocols	IIP v4 - TCP - UDP - HTTPS – TFTP - RTP - RTCP -DHCP - SNMP - DiffServ - TOS – STENTOFON CCoIP® - SIP
LAN protocols	Power over Ethernet (IEEE 802.3 a-f), VLAN (IEEE 802.1pq)*, Network Access Control (IEEE 802.1x)*, STP (IEEE 802.1d), RSTP (IEEE 802.1d-2004)
Audio technology	Telephony 3.4kHz (G.711) , Wideband/HD Voice (G.722), Active noise filtering, Acoustic echo cancellation, Open duplex, Volume override
Audio output	1.5 Watt - 75 dB @ 1 m from speaker
Management and operation	HTTPS (Web configuration), DHCP and static IP, Remote automatic software upgrade, Centralized monitoring, Status LED
Advanced features	Dual port managed data switch supporting VLAN and network access control
Compliance	CE and FCC Part 15
Certificates	UL 60950-1, cUL 60950-1, CB to IEC 60950-1
IP Rating	IP-32

TECHNICAL DIMENSIONS



ACCESSORIES



CRM-V-DAK48

Item number: 1008010100



CRM-V-GN

Item number: 1008097500



CRM-V-HS

Item number: 1008097100



ON WALL BACK BOX

Item number: 1008098600



FLUSH MOUNT BACK BOX

Item number: 1008098700



DESK STAND, IP FLUSH MASTER

Item number: 2810020001



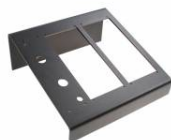
SINGLE DESK STAND CRM-V

Item number: 2810020006



DUAL DESK STAND CRM-V

Item number: 2810020005



TRIPLE DESK STAND CRM-V

Item number: 2810020004